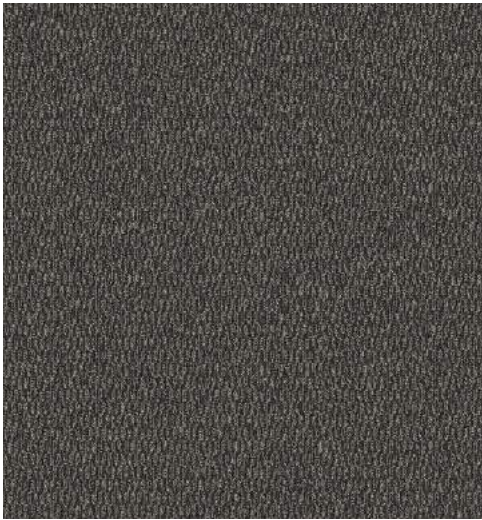


## TRACTION II

Traction II is inspired by the raw look of nature's distressed and weathered effects on granite and aged stones. Its textural patterned surface creates visual warmth for any inviting interior. This SD Nylon broadloom comes standard on our WeldLok Plus performance backing and is comprised of nine colorations featuring both tonal and multicolored hues.

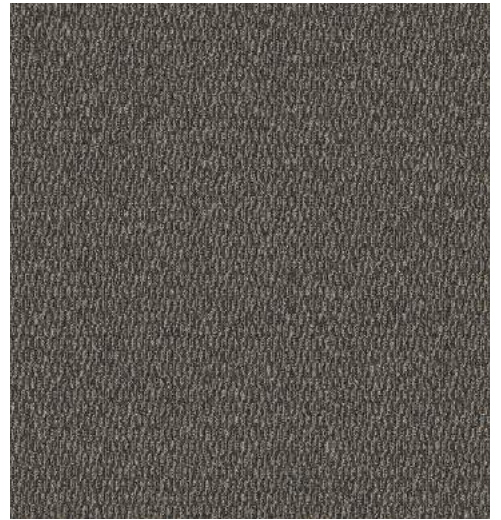




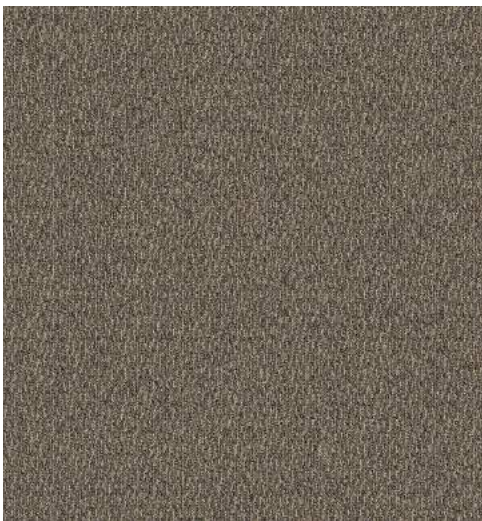
989 Midnight



978 Terra Clay



965 Slate Grey



928 Driftwood



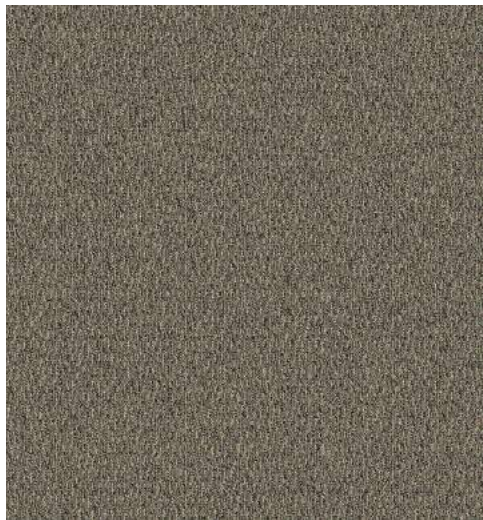
879 Earth Scape



837 Sand Dune



719 Wrought Iron



689 Herbal Garden



589 Jeweled Lapiz

Cover: 589 Jeweled Lapiz



## TRACTION II

<b>Product Type</b>	Broadloom
<b>Construction:</b>	Tufted
<b>Surface Appearance:</b>	Enhanced Loop Graphic
<b>Gauge:</b>	1/10" (39.37 rows per 10 cm)
<b>Pile Weight:</b>	28 oz/yd <sup>2</sup> (949 g/m <sup>2</sup> )
<b>Pile Thickness:</b>	.139" (3.53 mm)
<b>Stitches Per Inch:</b>	11.0 (43.31 per 10 cm)
<b>Dye Method:</b>	100% Solution Dyed
<b>Fiber Type:</b>	Colorstrand® SD Nylon
<b>Stain Release Technology:</b>	Mohawk Protection Plus Stain
<b>Soil Release Technology:</b>	Mohawk Protection Plus Soil
<b>Density:</b>	7,251
<b>Weight Density:</b>	203,050
<b>Primary Backing:</b>	Woven Polypropylene
<b>Secondary Backing:</b>	Weldlok® Plus
<b>Pattern Repeat:</b>	5.2" (W) x 5.7" (L)
<b>Width:</b>	12' width (3.66 m)
<b>Flammability:</b>	ASTM E 648 Class I (Glue Down)
<b>Smoke Density:</b>	ASTM E 662 Less than 450
<b>Static Propensity:</b>	AATCC-134 Under 3.5 KV
<b>IAQ Green Label Plus:</b>	3802
<b>CRI Appearance Retention Rating:</b>	Heavy Traffic
<b>Warranties:</b>	Lifetime Limited Wear Warranty, Lifetime Limited Static Protection Warranty, Lifetime Limited Edge Ravel, Zippering, Delamination, and Dimensional Stability Warranty, Lifetime Limited Colorfastness to Light Warranty, 10 Year Limited Stain Resistance Warranty, 10 Year Limited Colorfastness to Atmospheric Contaminants